

Timeless Designs.
Handcrafted Quality.
Unrivalled Service.

WWW.NEATSMITH.CO.UK

Contents

04 | Walk-in Wardrobes
and Dressing Rooms

10 | Hinged Door
Wardrobes

26 | Sliding Door
Wardrobes

30 | Accessories

36 | Lux
Accessories

38 | Bespoke
Cabinetry

42 | Living
Room Units

46 | Home Offices
and Studies

50 | Meet our
Founders

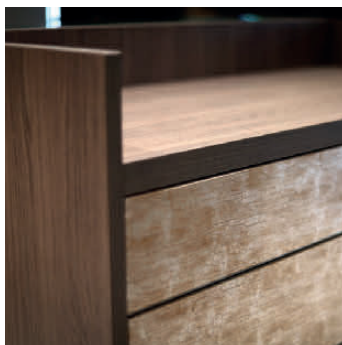
51 | How
we work



Walk-in wardrobes & dressing rooms

Your Neatsmith walk-in wardrobe will be completely bespoke, created to work with your life and the storage features you require – we do not use standard carcasses which allows us to maximise your storage. We can work with you to include sophisticated lighting effects and bespoke features to make sure your unique Neatsmith wardrobe feels special to use every single day.

The ultimate in luxury storage, a Neatsmith walk-in wardrobe truly transforms your daily experience and turns a busy life into an ordered one. Many of our clients maximise excess space in a large bedroom or see the potential in turning a small, spare bedroom into a walk-in wardrobe.

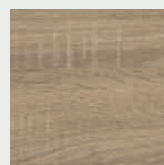


WWW.NEATSMITH.CO.UK

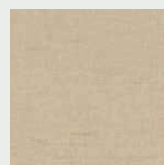




Internal Carcass Veneer Colours



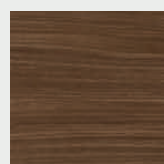
Shadow Oak



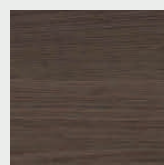
Beige Linen



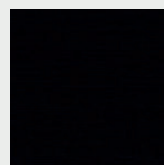
Grey Linen



Walnut



Anthracite

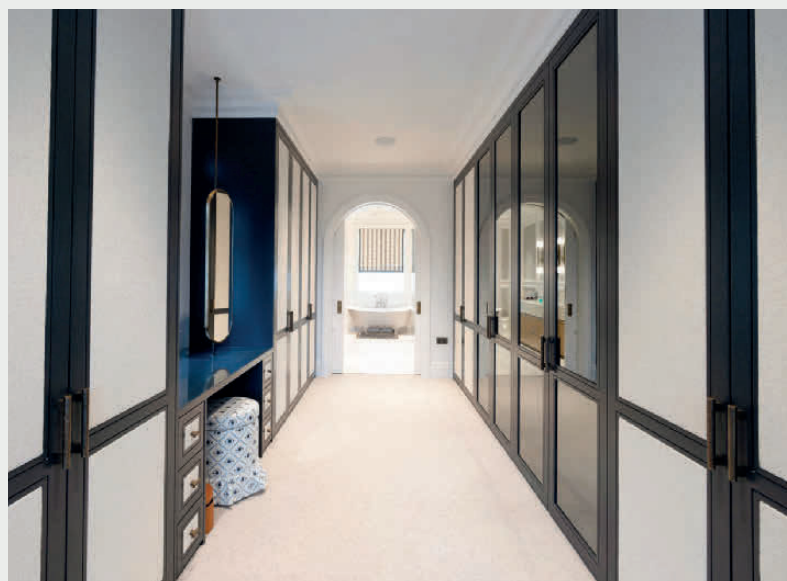


Dark Oak

SPECIFICATION

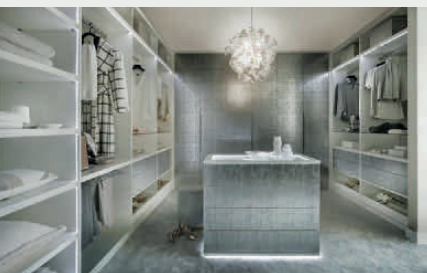
600mm depth required, units can be made to any depth. 38mm shelving and 22mm uprights. Drawers fitted with full extension soft close runners. All drawers are made from a luxury linen veneer.

TRANSFORMING SPACES



“Neatsmith are superb. Our custom dressing room was fitted 8 years ago and still looks immaculate and contemporary. The design makes great use of our space, and fitting was accurate, tidy and quick. Their customer service and quality deserves more than 5 stars!”

KAREN R





“We are absolutely thrilled, our wardrobes are without doubt exceptional; beautifully designed and built. Also very pleased with the installer, their work was exemplary and they worked very neatly and quickly.”

BECKY C





All our bespoke drawers are fitted with full extension soft close runners as standard. They are the best drawer runners available on the market and they come with a lifetime warranty.

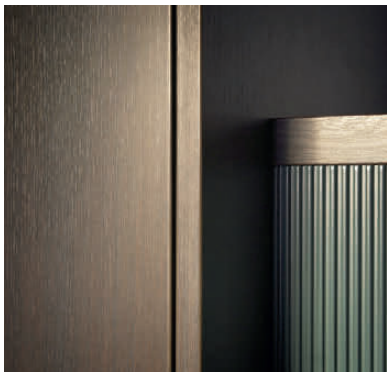


Hinged Door Wardrobes

Every Neatsmith hinged door is hand made to order by skilled craftsmen using the finest quality materials and processes. All our hinged doors are made to measure and most of them can be made up to 2.8m in height.

A Neatsmith hinged wardrobe can be designed to work around all sorts of awkward spaces including sloping or angled ceilings, allowing us to maximise your storage space.

There is a wide range of colours and materials to choose from as well as a beautiful handle collection to complement your design.







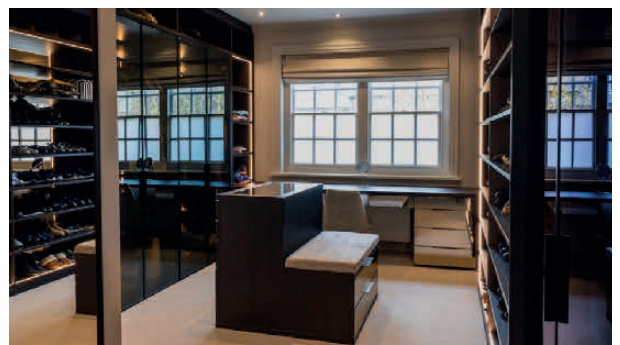
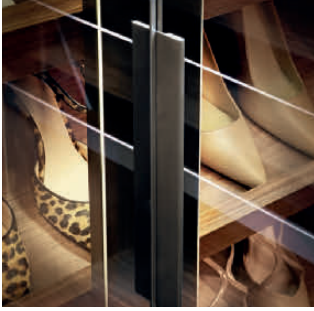
Lights On



Lights Off

REFLEX GLASS

This beautiful mirrored door has a secret – when lit from the inside the glass becomes transparent. Pop into one of our showrooms to really appreciate them.





Castille Aspás



Castille Laces



Castille Luna

CASTILLE

Our elegant Castille doors are a real showstopper and have become one of our most popular hinged doors. There are 6 styles to choose from and any of our glass or mirror finishes can be used in the doors.



Castille Plain

Available in our curated range of matt colours, we can also colour match to any RAL number or paint sample.

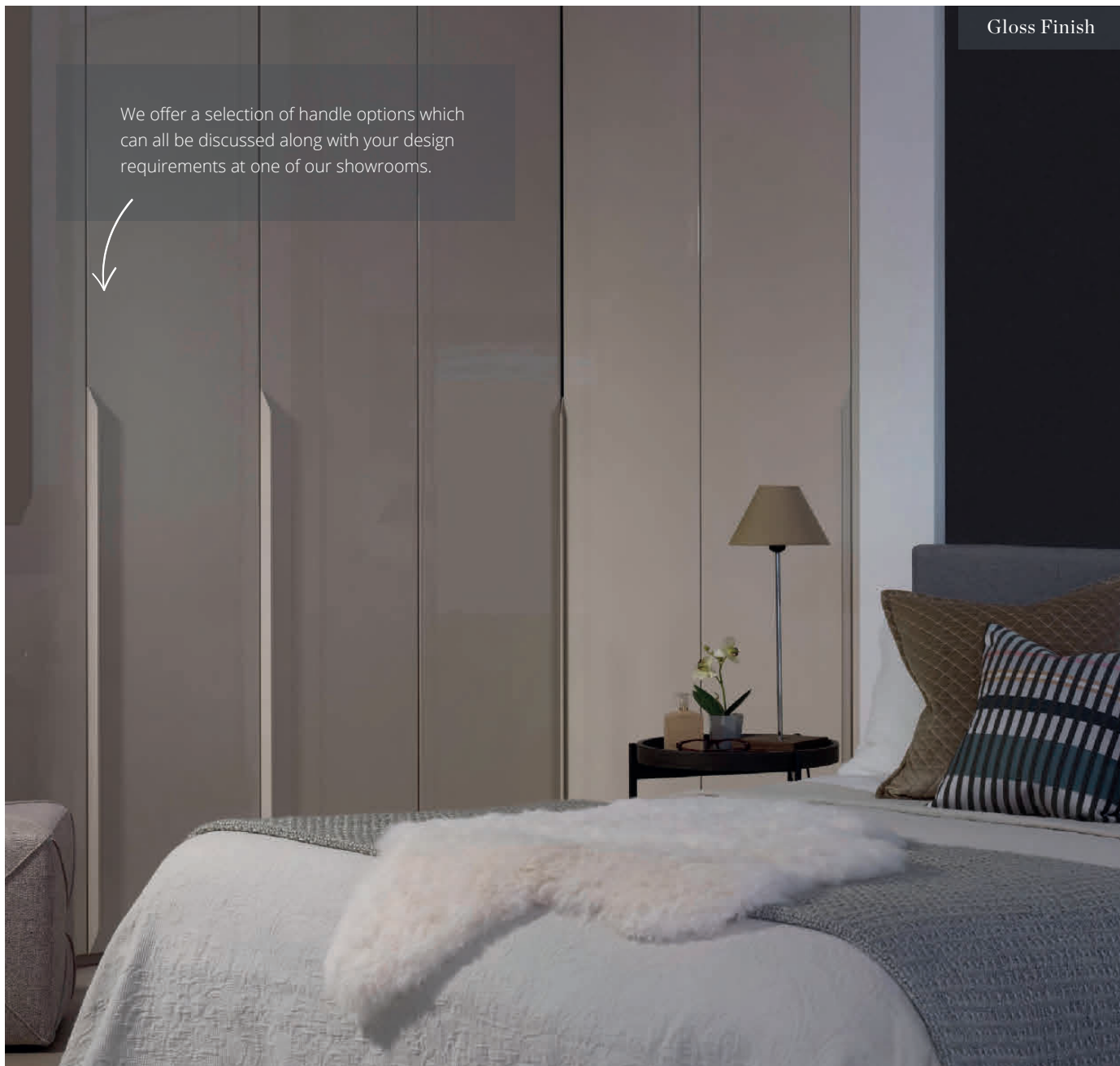


We offer a number of fabric finishes for the panelling (as well as our usual lacquer options for the frame) but a lot of clients specify their own so that the wardrobe can tie in with the other soft furnishings in their room.

The demand for this truly unique and luxurious door shows no sign of abating and we look forward to many more Castille Fabric wardrobes being installed this year.

Gloss Finish

We offer a selection of handle options which can all be discussed along with your design requirements at one of our showrooms.



Matt Finish



LACQUERED

The Neatsmith hinged door colour palette offers a range of sophisticated colours in either a matt or gloss finish.

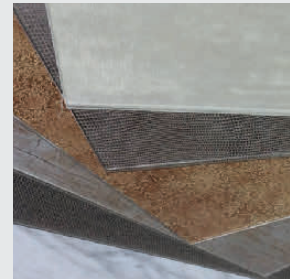
There is a small additional charge if you require a bespoke colour match to your paint colour.

The interior of your wardrobe is available in 6 unique Deco Veneer, see page 7 for options.



DECORATIVE GLASS

Made from a wide range of intricate fabrics covered by glass for a luxurious effect, you can choose to feature these glasses as your wardrobe doors, back panels or drawer fronts. Decorative glass can be used on its own to create a beautiful finish or incorporated into a design to complement another one of our wardrobe styles.





GREEN GLASS

We added the luxurious deep green Highland into the Neatsmith range in 2023. This enigmatic colour instantly became a firm favourite amongst our customers as people seek to bring more natural hues into their homes. To pair with this timeless shade, we are thrilled to announce the launch of our latest innovation Green Glass.



FRAMELESS GLASS

Since installing our own specialist glass polishing machine in our factory these doors have quickly become one of our signature finishes. No matter which one of our 50 glass finishes you go for, the back of the door will always match the internal Deco veneer you have chosen.

Brushed Satin Brass handles add a touch of elegance when paired with our Rattan wardrobes



RATTAN

These handmade lacquered hinged doors with natural rattan panels are one of our most popular additions. We fell for their style and texture, instantly knowing we had to include them in our collection, and they have quickly become a favourite amongst our interior designer clients too.



Our Lungo handle, sleek and softly curved, is offered in a brushed gunmetal finish.

CORDONA

Our Cordona doors are proving popular for use throughout the home. Adding visual interest and texture, they're particularly popular for use on bar units and living room furniture but also make a stylish statement on a wardrobe, as shown here.

SHAKER

Achieving classic style with simple detailing our ever-popular Shaker doors are a firm favourite. Neatsmith have various handle choices but you can supply your own should you wish.

These doors are available in our curated range of Neatsmith colours although a colour of your choice can be used for a surcharge.



TERMOCOTTO

Our beautiful Termocotto oak veneer doors are manufactured using a fire hardening technique that dates back thousands of years – the Japanese called it shou-sugi-ban.

The heat treatment not only gives the doors their trademark natural look but it also hardens the extra thick veneer.



FLUTED GLASS

New for 2024, this beautiful style is a popular addition to home bars and bespoke cabinetry units, and looks particularly stylish when backlit with LED lighting as the glass perfectly diffuses the light. This door is offered with an anodised aluminium frame in a Lux, White or Champagne finish.

DECO VENEER

Our Deco veneer doors are an understated classic, available in 6 finishes and with a wide choice of handles, they can complement any interior scheme.



TRIM

These stylish yet understated doors feature recessed handles to give a seamless look. Whether you choose to match the handle to the door or go for a complementary finish you can be sure of a timeless elegant wardrobe.

Available in our curated range of matt and gloss colours, we can also colour match to any RAL number or paint sample.



OTTO

Our beautiful handmade Otto doors feature an indulgent brushed brass inlay and are made from a luxurious Canaletto Walnut veneer or matt and gloss lacquer. This door style is one of the newest and most impressive in our range, and it is also available in a lacquered finish.



Our designers can help you find the perfect combination of one of our curated lacquer shades and Osborne & Little fabrics. Alternatively, you can choose your own lacquer colour and fabric to match your particular interior scheme for a small additional cost.

BELGRAVIA

Our new Belgravia wardrobe draws from the best of some of our favourite designs: a lacquer frame that can be matched to any colour, a soft fabric panel, and a beautiful brass inlay.

Sliding Door Wardrobes

Sliding door wardrobes are ideal where space is at a premium but storage needs to be maximised. They can be made to almost any size and almost all doors can be fitted with a soft close mechanism.

The range of Neatsmith sliding door wardrobes is extensive and the options from which you can choose are many; such as the number of doors, the colours of doors, and the number of panels per door.

Neatsmith manufacture the very best sliding wardrobe doors in the UK. Every door is fitted with 10 wheels to make sure they slide perfectly every time. The mechanism also comes with a lifetime guarantee.

WWW.NEATSMITH.CO.UK



SPECIFICATION

700mm depth required for hanging.

Maximum door size up to 2800mm in height and 2500mm in width.

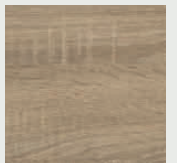
The base of each door carries a pair of sealed self-levelling double wheeled cassettes capable of supporting over 100 kilograms.

The top guides include three high grade vulcanised rubber wheels on the corner of each door.

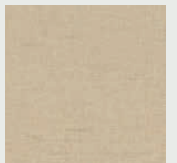
Doors over 750mm wide can be fitted with a soft close, 22mm internal carcass and 38mm shelves.

Drawers fitted with full extension soft close runners. All drawers are made from a luxury linen veneer.

Internal Carcass Veneer Colours



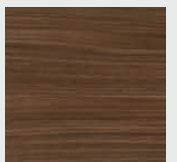
Shadow Oak



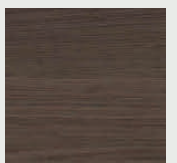
Beige Linen



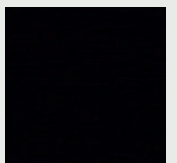
Grey Linen



Walnut



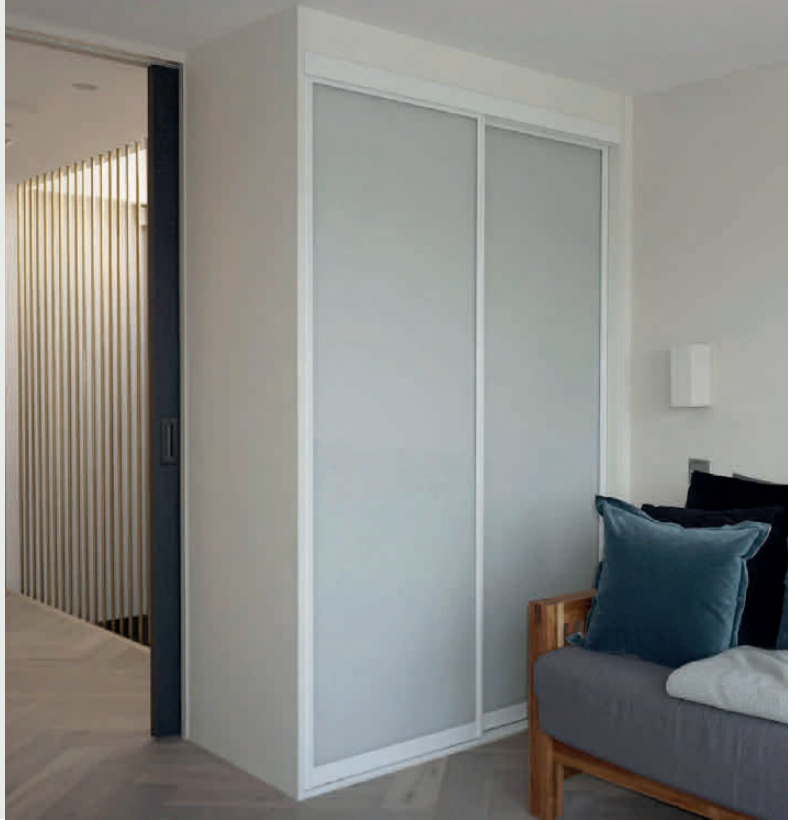
Anthracite



Dark Oak

ARIA

With our glorious Aria sliding doors, you can have up to 5 different panels, of varying sizes, in each door. There are 25 different glass finishes to choose from and we can powder coat the tracks and frames in a range of colours too – the choices are almost endless.



“From start to finish, I was so highly impressed with everyone we dealt with, from the designer to the fitters to the organisation behind the scenes. Everyone turned up on time, they cleaned up at the end of every day. We are so thrilled with our new dressing rooms. Would 100% use again.”

TONI W



SERIES 1 PROFILE

This elegant design statement can include up to 5 panels on each sliding door, and can be lacquered in any of our curated colours. Series 1 Profile doors come with a selection of 25 glass colours to choose from as well as silver, bronze and grey mirror.



There are 21 glass colours to choose from and silver, bronze and grey mirror tones.



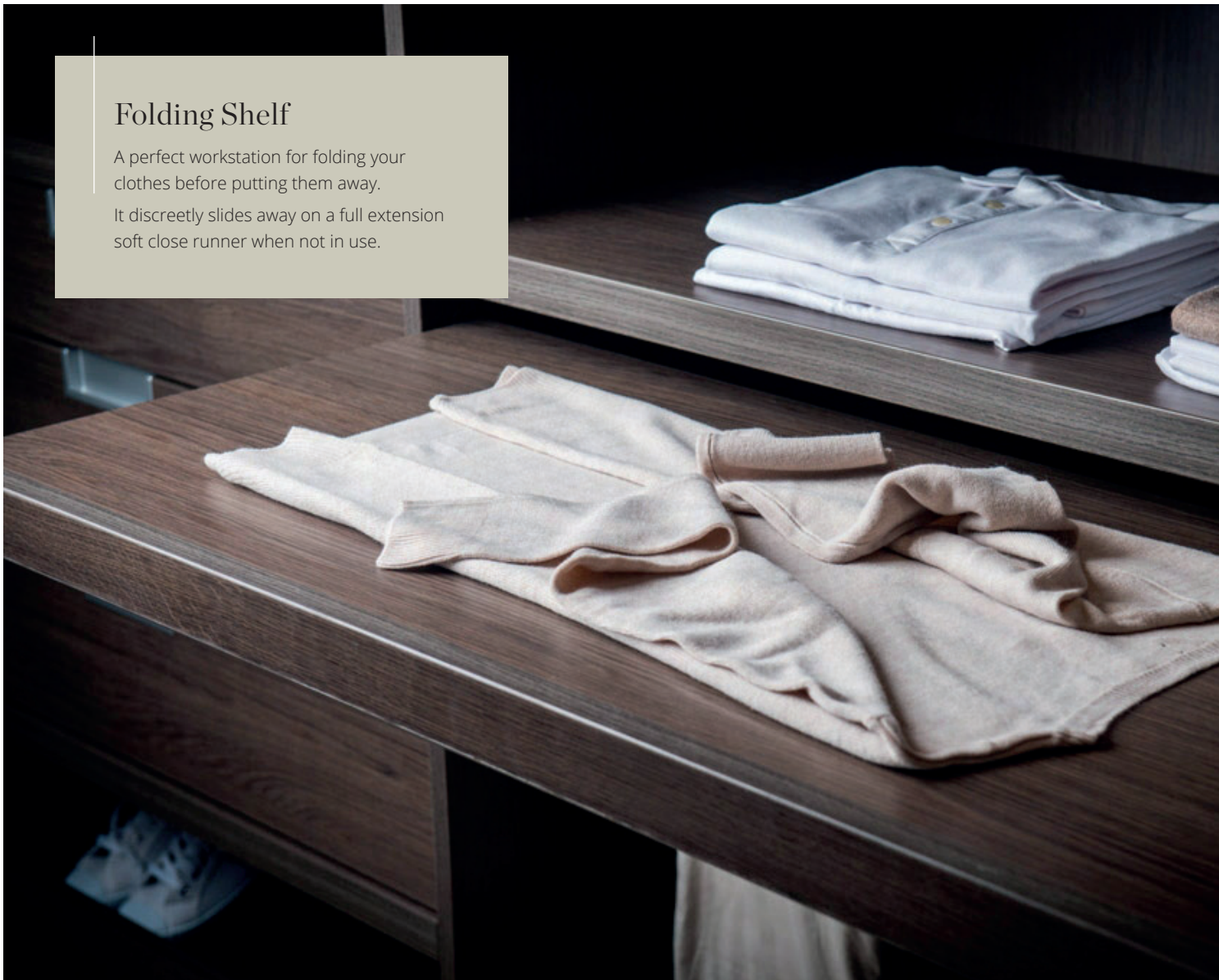
CLOISTER

Our cloister doors are unique – they are the only made-to-measure frameless glass wardrobe doors available in the UK. These doors can be up to 2800mm high and 1250mm wide.

Folding Shelf

A perfect workstation for folding your clothes before putting them away.

It discreetly slides away on a full extension soft close runner when not in use.



Pull-Out Shoe Drawers

Designed to take both men's and women's shoes, these drawers are always fitted with our full extension runners and can either be fitted with a push latch or a soft close mechanism.

Accessories

The showroom teams can talk you through the Accessories Collection, which combines perfectly with a multitude of internal options, designed to make using your new Bespoke Cabinetry a pleasure.

The accessories also make day-to-day living easier with tailored ideas that work hard to keep every customised space inside the wardrobe neat and tidy.

Your designer will discuss your specific storage requirements with you at the initial design stage to ensure we incorporate the right balance of storage for you and your lifestyle.



Fixed Shoe Rails

A neat and practical way to store shoes at the bottom of your wardrobe.



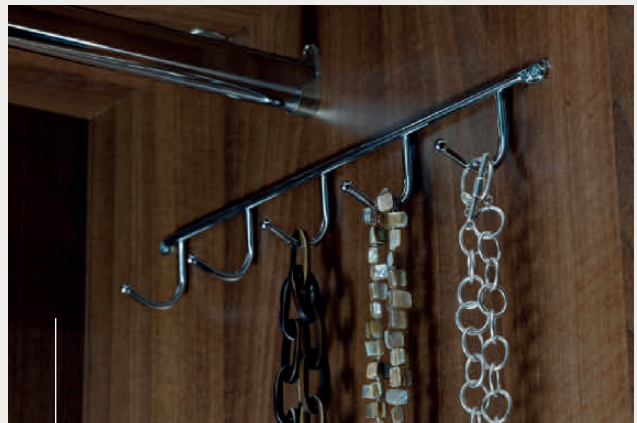
Glass Shelving

Take your interiors to the next level by incorporating glass shelving.



Built In Cupboard With Lock

For those personal documents and possessions you want to keep under lock and key.



5 Hook Rail

Ideal for neat and tidy storage. A great way to display smaller items such as socks and jewellery.



Swivel Hook

Useful for selecting clothes whilst dressing. It can turn a full 360 degrees.



Drawer Dividers

Ideal for neat and tidy storage. A great way to display smaller items such as socks and jewellery.

“Neatsmith are the epitome of quality in both service and product. From the day we walked into the showroom to design three dressing rooms and a cloakroom we were given unconditional service. The attention to detail and the efficiency of all communication from emails to plans to bookings was second to none.

CLAIRE Y



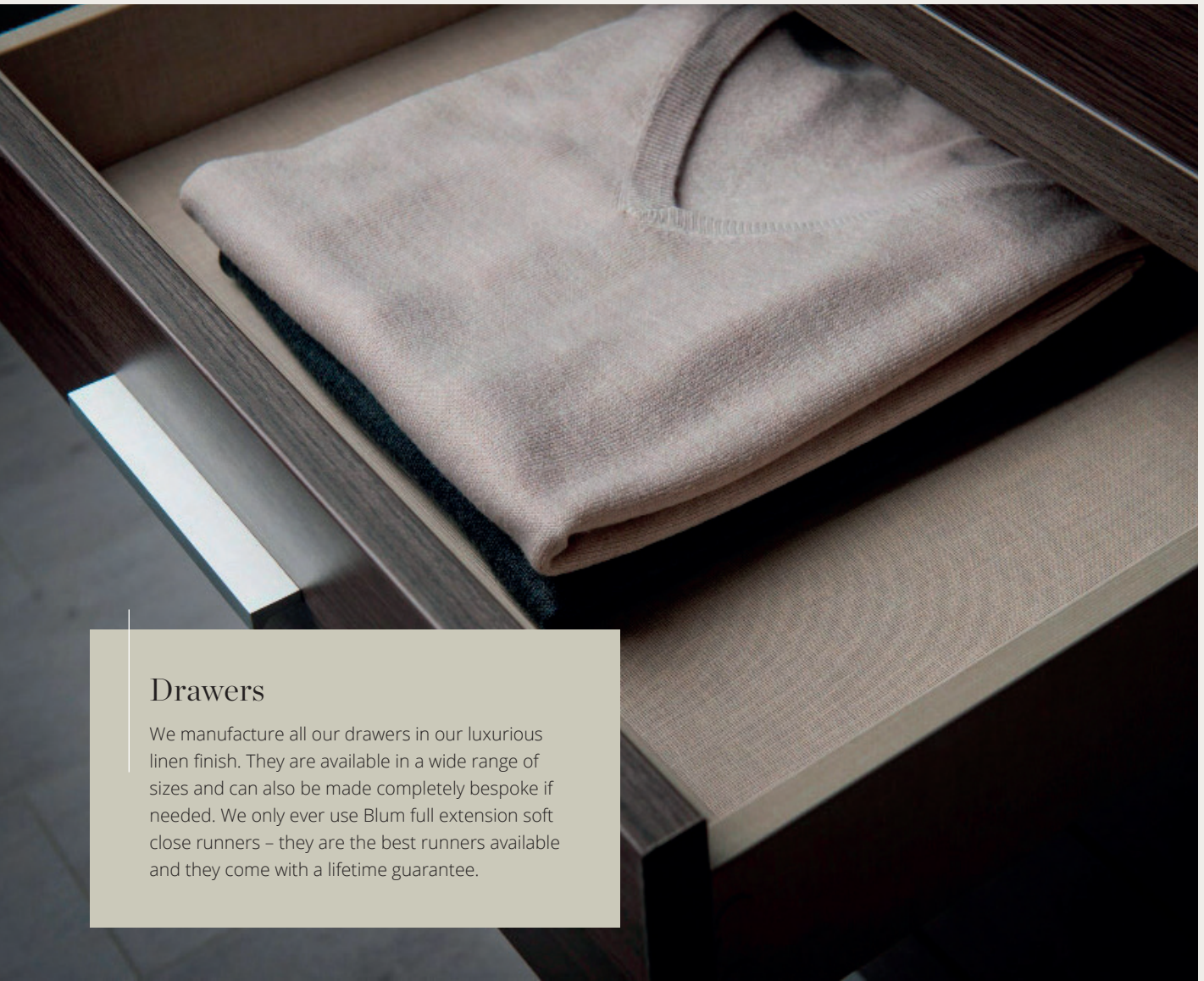
Storage Box

Our Neatsmith storage boxes are the perfect place to store larger items such as blankets or seasonal accessories including scarves and gloves.



Jewellery Inserts

Our new faux leather jewellery inserts are the perfect way to store and display all your precious pieces. Watches, rings, earrings – we have the perfect storage solution for you.



Drawers

We manufacture all our drawers in our luxurious linen finish. They are available in a wide range of sizes and can also be made completely bespoke if needed. We only ever use Blum full extension soft close runners – they are the best runners available and they come with a lifetime guarantee.



Glass Topped Drawers

Turn a drawer into a display case for your favourite accessories with our glass top design, available with inlaid LEDs upon request.



Glass Fronted Drawers

Our beautiful glass fronted drawers are crafted from our curated selection of decorative glasses.



Internal Mirror

Mirrors can be installed onto the inside of hinged doors or the back panel of your wardrobe.



Tie Bar

This rail takes up no room at all, useful for scarves and ties.

“I can’t recommend Neatsmith enough! Their professionalism, craftsmanship and price for the quality of work is second to none.”

TARA C



Pull-Out Trouser Rack

Keeping trousers sharp and crease free, making daily choices effortlessly simple.



Pull-Out Tie & Belt Rack

Keep your leather in good condition by having it hanging and easy to reach.



Swivel Mirror

Folding away neatly to one side of an internal space, this mirror is forever useful for a full view when getting ready.

Pull Down Hanging Rail

Folding away neatly to one side of an internal space, this mirror is forever useful for a full view when getting ready.



Pull-Out Tie Rack

For easier selection and visibility of your ties, without any other items getting in the way. Holds 32 ties.

Lux Accessories

Our Lux collection of accessories and hardware features a matt, dark mocha-toned metal. Used together, they add a touch of sophistication and luxury to any wardrobe.

“We absolutely love our wardrobes and final design. Neatsmith were professional an a pleasure to work with.”

N SHAH

Lux Hanging Rail

Create a discrete look with the stylish Lux rail.





Lux Laundry Basket

Collect your washing and keep it out of sight. The washable pouch works on smooth runners for easy access. Available in single or double sizes which can be used to separate washing into lights and darks.



Lux Trouser Rack

This accessory creates a dedicated place to neatly store trousers. With its pull-out feature and the ability to remove each rail separately, it's quick to select the ones you need in the morning and to put them away easily in the evening.



SCROLL HANDLE



KNOB HANDLE



T BAR HANDLE

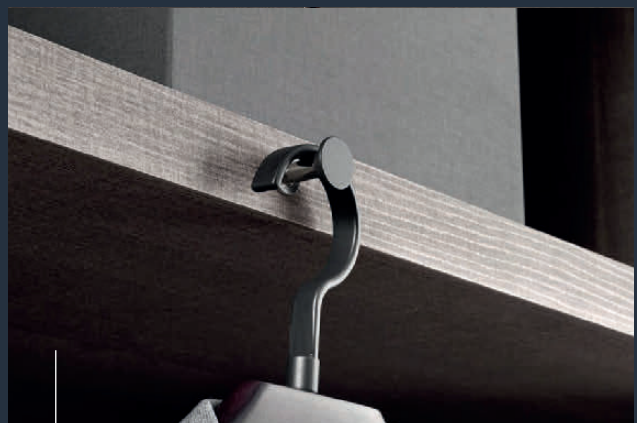
Lux Handles

Matching door and drawer handles, made from solid brass with a special vintage finish applied.



Lux Glass Drawer

Soft closing smoked glass-fronted drawers which allow you to peek at what's being stored within.



Lux Hook

Add a sophisticated hanging solution with the Lux hook.





Bespoke Cabinetry

Why settle for ordinary storage when you can have extraordinary? Neatsmith offers spacious and beautifully designed units that will elevate your storage experience to new heights. Discover our range from made-to-measure living room units and media centres to bespoke bars and playroom cabinets.

A bespoke Neatsmith unit really is the only choice if you want to maximise the storage space you have available while also making sure that everything fits perfectly.

WWW.NEATSMITH.CO.UK



BEDSIDE TABLES

Neatsmith can design and install bespoke
bedsides, replicating the style and finish to
perfectly complement your new wardrobes.



DRESSING TABLES

Whether your Neatsmith dressing table is part of your walk-in wardrobe, or a freestanding unit, you can be sure that we will have thought of everything – space for your hairdryer, mirrors, lighting – and that it not only maximises your storage space but works to your individual needs.

Living Room Units

A bespoke Neatsmith living room unit really is the only choice if you want to maximise the storage space you have available while also making sure that everything fits perfectly.

We will measure your TV, we will measure that trophy or heirloom that you want on display and with a combination of open and closed sections, glass shelves, lighting and mirrored or glass back panels our experienced designers will create a living room unit that not only looks amazing but fits perfectly into your room and the way you want to live.



WWW.NEATSMITH.CO.UK







“The whole experience was extremely positive, from the excellent designers, fantastic product to the professional fitters. Would highly recommend.”

SIMON C





Home Offices & Studies

Neatsmith design and install bespoke home offices and studies – we can make your desk any depth, width or shape you require. Your peculiarly shaped printer will always fit and whether your documents hang out in suspension files or lever arch files, there will always be a perfectly designed space for them.

With clever cable management and even wireless charging points, Neatsmith will design a calm, intelligent space for you to work in.

Whether your home calls for a modern office or a slightly more classical study, our wide range of door styles and finishes means we have it all covered. With our creative use of glass and mirrors, even the smallest of spaces can feel spacious and luxurious.



WWW.NEATSMITH.CO.UK



“After comparing various bespoke wardrobe companies we decided on Neatsmith, absolutely 5 star company, from the home survey to designing what we wanted. Our expectations have been surpassed. The install went perfectly, really professional organisation, highly recommended!”

ANTONIO M





Meet our Founders

Neatsmith creates and installs bespoke wardrobes, living room bespoke cabinetry and home offices in London. We are a family run business established since 2005.

We employ a dedicated team of designers and cabinet makers who help us deliver innovative design, enduring quality and impeccable service.

Our five showrooms are run by experienced managers and knowledgeable designers, all ready to meet your exact needs when designing your storage solution.

Visit our showrooms to gain inspiration from examples of our stunning finished products and gather ideas for your own custom-made design. Alternatively, phone us for an initial consultation.

With a collection of the very best materials, accessories and finishes, we can create a design customised for you.



“We’re dedicated to working on a very personal level with our clients to produce something of real quality which we feel proud to say is by Neatsmith.”

PHILIPP NAGEL – DIRECTOR

How we work

STEP-BY-STEP



STEP 1

Initial Meeting

We have 6 showrooms in and around London, where we invite you to be inspired and have a chat with a member of the team. Here, you can browse our extensive collection, see the quality of our craftsmanship first-hand and discuss your project with our friendly and knowledgeable designers.



STEP 2

Design & Quote

After the initial meeting our experienced Neatsmith designer will turn your ideas into a full colour 3D design, giving you a clear visualisation of your storage space and its place within your home. Your designer will be on-hand throughout to offer storage and design advice and to help you maximise your storage space.



STEP 3

Placing Your Order

Once we have finalised your bespoke Neatsmith design we ask for a 30% deposit and then we send our surveyor to carry out a full site survey before we begin producing your wardrobe in our Watford factory. We will update and inform you at every step of the production process and find an installation date to suit you.



STEP 4

Delivery & Installation

At Neatsmith all of our fitters are full-time employees, allowing us to offer an extremely high level of craftsmanship. We will work conscientiously and leave your home as you would expect to find it. Beyond fitting, our aftersales team are always on hand, should you ever need us.



STEP 5

Aftercare

Beyond fitting, our aftersales team are always on hand, should you ever need us. When you invest in a Neatsmith product you can rest easy knowing they are supplied with a market leading warranty and a lifetime guarantee on all hinges and drawer runners.

Neatsmith we are committed to being as sustainable as possible, which is why our wooden panels come from a certified FSC UK supplier who gives sustainable forestry their highest priority and we use manufacturing offcuts to heat our factory, you can find out more by visiting our website.





VISIT OUR SHOWROOMS

Chelsea

544 King's Road, Chelsea, SW10 0UB
Monday to Saturday, 10am - 6pm
t: 020 8017 3909

Hampstead

6-8 Frognal Parade, 158 Finchley Rd, NW3 5HH
Monday to Saturday, 10am - 5pm
t: 020 7794 3808

Brentwood

6 Ingrave Road, Brentwood, CM15 8AT
Tuesday to Saturday, 10am - 5pm
t: 01277 563 901

Hatch End

471 Uxbridge Road, Hatch End, HA5 4JS
Tuesday to Saturday, 10am - 5pm
t: 020 8421 5763

Hampton Hill

120 High Street, Hampton Hill, TW12 1NS
Tuesday to Saturday, 10am - 5pm
t: 020 8977 7217

Guildford

252 High Street, Guildford, GU1 3JG
Tuesday to Saturday, 10am - 5pm
t: 01483 361 9357

email: info@neatsmith.co.uk | www.neatsmith.co.uk

